

SEDGEFIELD NEWS

Produced by volunteers for the people of Sedgefield, Bradbury, Mordon and Fishburn

May 2021 Edition

Deadline for June: Friday 14th May



Photography by Paul Heasman



It's probably true to say that for many of us, the market's safe and successful return to trading has been a beacon of hope at a time when we have been largely deprived

of community life. As in so many walks of life, a scheme which requires voluntary effort and cooperation brought out the best in everyone involved - the organisers, volunteer force, stalls team, traders, the friendly COVID-19 stewards and above all, the long, patient queues of customers. We owe them all thanks.

At the beginning of the last, difficult 15 months of lockdowns, came immediate shutdown. However, our market was very much in demand by businesses and customers alike, so during the next few weeks, the rules of the first lockdown were studied carefully. This was followed by a painstaking process of finding a way to bring our familiar monthly Sunday mornings back.

Actually, familiarity was out of the question of course. Even when the weather wasn't forcing a change of venue, as happened 3 times during the year, anything free & easy about farmer's market shopping had to change. Sociable Sundays may have been our tagline for years, but now there could only be distanced banter. First to go were the SDT information and live music tents, the charity stall and coffee wagon - everything that encouraged lingering on the green. Stalls were limited to those considered essential in market terms - food, drink and plants.

Two colleagues were recruited to run the market on the day while the market manager stayed safe in the background to make these arrangements. Stewards provided safe entry and exit points, hand sanitiser and advice. Stallholders asked their customers to order in advance so they could pick up orders and keep moving round the one way system. It has worked and now the market will gradually grow again. *Read how on p 8.*

Another sad loss to COVID-19

The 2021 Sedgefield Agricultural & Horticultural Show

The Show's organising committee have taken the sad decision to cancel this year's show, which was due to be held on the Robert Brown show field on Saturday August 8th 2021.

After consultation with the Association of Agricultural Shows and Government guidelines relating to Covid19, it has been decided that based on the information available to us, it will not be practical to organise and hold the show this year. In making this decision, we consider many aspects and particularly the safety and wellbeing of all stakeholders including, the organising committee, show members, judges, stewards, exhibitors, trade-stand representatives, the general public and the people of Sedgefield.

Government data will continue to dictate many activities including travel to different area's event attendance and post lockdown timescales. There could be changes to the proposed lifting of restrictions and this information may or may not be available to us at the time of this event being due to take place.

Cancelling this year's Show has been an extremely difficult decision for the Committee Members to arrive at, particularly as we know how much this event means to our local community. The Committee would like to thank the volunteers and supporters of Sedgefield Show-this ongoing support is vital in permitting us to deliver this special event each year. We are looking forward and we are already laying plans for Sedgefield Show 2022 - we look forward to seeing you there on Saturday 13th August 2022!

We are always looking to recruit additional volunteers and supporters to help with future shows and would look forward to talking to anyone that may be interested to contact: ian@sedgefieldshow.co.uk or 07803599294.

Ian Mason, Chairman.



Sedgefield Calendar

The New Year may be a long way off but local photographers are already being urged to take pictures of life in and around Sedgefield for possible use in the 2022 calendar planned by the Friends of St. Edmund's Church.

Membership secretary Brian Mutch said "Because of the recent constraints, we have not chosen a theme for 2022 so photographers have much greater scope to demonstrate their ability to spot and produce an eye-catching picture for a highly-rated calendar.

Drone photographs are welcome from those holding current CAA approval."

Closing date for entries is mid-October.

Copyright-free entries can be in colour or monochrome and suitable for use in the now traditional, slimline, month-by-month, hang-anywhere calendar which has proved extremely popular with people over a wide area since it was first launched four years ago.

Entries should be forwarded to Brian via e-mail

at b.mutch@btconnect.com or as hard copies to 6 Hasledon Grove, Sedgefield, TS21 2JW.

For more information, call him on 01740 622302.

Chair Cycling Challenge

This summer, Neil O'Connor, the director of Fleet Recruitment Ltd, and chair of Sedgefield Village Veterans, will be undertaking a massive cycling challenge to raise funds for a suicide prevention charity.

With the support and backing of his wife and friends, who are riding alongside him, he will cycle from his home in Trimdon Village to Caldicot in South Wales, in just three days, to raise £5,000 for PAPYRUS, the national Charity for the Prevention of Suicide.

Neil explains why he is undertaking the challenge:

"I lost my cousin to suicide. It was horrendous for his young family, his sisters and his poor Mum. I lost an RAF colleague and a much loved friend to suicide. He also left behind a young family and his RAF brothers were heartbroken.

Very recently I lost another of my dearest friends to suicide - someone I loved like a brother, who also left behind two young kids and a heartbroken family.

It was a final straw for me, and I just felt compelled to do something, anything, to try and help stop this happening. I hope you will get behind us all, and make a donation, no matter how small."

Neil suffers from a liver disease, which means he becomes exhausted easily, so three back-to-back ten hour rides will be a truly gruelling challenge.

The ride will take place in August and if you would like to help, please visit Neil's fundraising page at www.justgiving.com/fundraising/neil-o-connor6



Community College designated a Behaviour Hub

Sedgefield Community College (SCC) has been selected as a lead school in the Department for Education's £10 million Behaviour Hub Programme. The selected schools are some of the highest performing schools and multi-academy trusts in England and SCC is one of only three chosen in the North East. The school will partner with other schools who have requested help, to improve pupil behaviour. SCC will work with each school to design the culture they want to see; create an action plan; and monitor their performance.

Geoff Robinson, Head Teacher at SCC, commented: "It is the reputation and performance of SCC that has been instrumental in being designated as a lead school in the Behaviour Hub programme, I want to extend my thanks to all of our students, parents and staff for your support of our school vision and culture. It is through these very high aspirations that our students have demonstrated to DfE that personal responsibility and good discipline overwhelmingly results in the very best Ofsted ratings and overall academic outcomes."



Me, My Art and Lockdown

Following the Easter break, pupils in Key Stage 2 at Sedgefield Hardwick have been exploring the art world with their topic, 'Me, My Art and Lockdown' - about life during lockdown and the challenges that many people have faced.

Children in Years 3 and 6 have been sculpting with different materials. Year 3 were inspired by artists such as Jess Miller to create clay face jugs, which symbolise their experiences over the last year. In Year 6, the children focused on Antony Gormley and other sculptors to create sculptures made of wire to celebrate the freedom we all enjoyed before lockdown and hope to again soon. Year 4 have been examining the work of Jean Baptiste and other artists to create their own silk painting banners while Year 5 have focussed on animation techniques in the style of Nick Park, the creator of the world famous characters Wallace and Gromit, to create their own animation videos. "It has been really fun to see my drawing about lockdown come to life using the techniques of stop-motion just like in the movies," commented Ellie, a Year 5 pupil.



A pupil at Sedgefield Hardwick school working on "Me, My Art and Lockdown".

BUSINESS UPDATE

Some frankly crazy rumours concerning the fate of the old Barclays Bank building were finally quashed last month, when we learned that it had been taken by an established family run business.

Work has been ongoing for some time on the old building, to adapt and modernise it within in order to provide up-to-the-minute accommodation for owner, Stephen Wears, his son Philip and other employees and the company -

Mango Dental Technology

It comprises three main components.

The Technology Studio delivers dental restorations to dental practices throughout the UK. The Denture Clinic, responsible for making bespoke dentures. And the Mango Tray Centre, the biggest independent provider of whitening trays in the UK.

Dental Technology has been in the Wears family for three generations, and the move into Sedgefield gives the company room to grow. New equipment and staff will enable continuous development of the digital design and manufacturing of existing and new products.

Mango will also be opening a Denture Clinic within the old Sedgefield bank. Stephen is trained as a clinical dental technician and can provide new dentures direct to the public. He has also trained with Japanese master Jiro Abe and is able to provide suction dentures that stay in without the need for fixative or dental implants.

"As a dental technician I have a fairly good idea of what is needed from case to case, but the big advantage of being a clinical denture technician is that I get to see exactly what you want and need from your denture. The result is that I can give you a tailored denture that will fit and look exactly as you want it to."

Dental Technology has changed significantly over recent years and Mango are pioneers of these developments. Using digital technology to make your smiles, including 3D printers to assist in creating dentures and dental crowns.

Next month in Business Update, Paul Savage brings you the first of a new series on the science and technology businesses developing on NETPARK.



The Hive

The Hive of Sedgefield, a not for profit, Community Interest Company led by volunteers, has proudly opened its doors to the public in Rectory Row.

They are selling freshly cut British flowers and local honey in the shop, alongside an art gallery in which a 'spot on the wall' provides a welcome opportunity for locals to display their own art work, photography or crafts. All are invited to call in and say hello and to see what is on offer. The Hive also welcome new volunteers for various roles, from gardening to serving customers.

If you would like more information about potentially volunteering or to enquire about a 'spot on the wall' then please call in for a chat.

The current volunteers have been busy bees in preparing the building and garden and we would very much welcome an extra pair of wings to join the happy hive.



Images of Sedgefield and the Surrounding Area

Paul Heasman contributes some delightful images to the Sedgefield News Facebook and Farmer's Market pages. Those taken on his drone camera (left & front page) early on at the April market are exceptional.

More of his photographs, along with those of other enthusiasts, can be seen on a special Facebook page.

Search for the group 'Images of Sedgefield and the Surrounding Area' to find an invitation to join.

Paul says "I'd encourage anyone local to join and post their photos, shining a light onto some of the treasures in our locality while also allowing those members of our community who can't get out and about an opportunity to see some of the sights for themselves."

GREENER SEDGEFIELD

Waste can be used to refer to so many things. Obviously it can be the items in your household bin but it could be the clothes you don't wear anymore, the mask you wore to pop to the shops or the items you don't want after having a spring clean. 'Waste' can be useful, passed on correctly and how we pass things on has evolved recently, with lockdown.

Charities have struggled to raise much needed funds with shops closed and events cancelled. Some have adapted by accepting good condition items by freepost. They are then sold online, passed to stores or if unsellable, recycled. Charities such as Oxfam and British Heart Foundation do this and you can gift aid at the same time. Some will take vinyl, books and ornaments in addition to clothing via this method. The Heart Foundation has also recently resumed furniture and electrical collections. Please consider using the local Facebook larder page for usable unwanted items. Recently, old paving slabs and helium party balloons have been offered and claimed, showing that someone may **need** what you don't want and it's not always obvious what! Getting more wear out of things generally means less waste ending up at the tip.

The pandemic has exacerbated single use. Over 100 billion face masks are used worldwide every month and not all disposed of safely. Unfortunately, it's estimated by scientists that there are now more face masks in the oceans than jellyfish. Wilko's have stepped up by putting face mask collection boxes in stores. After a period of quarantine the masks, mostly made of plastic, are processed by a Yorkshire company into become building materials, furniture or even more collection boxes. Keep yours and deposit them in the special collection boxes in local Darlington, Durham or Middlesbrough stores as well as others further afield.

Single use waste includes medicine blister packs, which don't go in your recycle bin. They contain mostly plastic which could be reused but the effort to process this has meant that no company was willing to do so until now. Terracycle have teamed up with Superdrug and some pharmacies who take them in their drop off boxes in store. They grind down the separated plastics and sell the raw material to manufacturers. Information on box locations can be found on the Terracycle website. A donation will be made to Marie Curie, Superdrug's chosen charity.

A reminder though, some waste is exactly what it says - WASTE! So PLEASE do not put gloves, single use masks or lateral flow tests into your recycle bin. If you do this it will contaminate the entire truckload, which is then consigned to the incinerator completely losing the point of recycling.

STEVE'S NATURE DIARY MAY 2021

I recently went into a school to do a forest school session, the first time for a year. After all the issues with lock down it was a little strange, but I was outside and lots of Covid precautions were in place.

The session started with an old favourite: a scavenger hunt, only ten things for the pupils to find, but during the process of looking carefully they found a lot more, including a little girl who found a two spotted ladybird, so we spent a little bit of time having a closer look at them, and questions followed along the lines of, "Does that mean it is 2 years old?" Answer, "No, it means it is a two spotted lady bird, one of 26 species of ladybird in the UK."

I then went on to discuss how a ladybird is a beetle which really confused them. Beetles come in an amazing variety of colours, sizes and shapes – they are not all black and as some people say ugly! Although they are often seen crawling around they all have hardened front wings which protect the hind pair of wings called elytra.

Beetles are the unsung heroes of the garden and the Royal

Horticultural Society (RHS) and The Wildlife Trusts seek our support as they launch 2021's *Wild About Gardens* campaign. The two charities are calling on gardeners to create habitats for these important but often overlooked insects which are a vital part of every healthy garden.

Providing a patch for beetles, including ladybirds, ground beetles and rose chafers, is a great way to encourage balance in the garden and boost biodiversity. Many species are under threat from habitat loss, pesticide use and climate change. The UK has more than 4,000 beetle species and, although a handful may eat plants, many are predators, pollinators and decomposers, feeding both the soil and larger garden visitors such as birds and hedgehogs. Ladybirds help gardeners by eating aphids while some ground beetles feed on vine weevil grubs and water beetles keep mosquito larvae under control in ponds. Even the much-maligned lily beetle provides food for parasitoid wasps.

Whenever I stroll around the garden or am out for a walk, I am always on the lookout for insects including beetles. They play such an important part in the ecosystem, with different roles in garden life – nibblers, pest controllers, pollinators, recyclers, and even undertakers. Like so much of our wildlife, they are under threat and I hope by shining a spotlight on them you might start to appreciate and encourage beetles in your gardens.

A downloadable 'Bring back our beetles' guide and more information about the campaign can be found on the Wild About Gardens website at: www.wildaboutgardens.org.uk



©entomart

The BRIGHTWATER GEM TRAIL

Over the upcoming year, North East artists Jo Howell and Emma Biggins will be working with local families to create an enchanting treasure trail and adventure guide - The Brightwater Gem Trail. They hope to inspire people to explore and celebrate our beautiful landscape and rich heritage. The trail will lead to nine community installations based around the River Skerne. Families will be able to be active together on their quest to discover all nine pieces of art. Themes or stories will be inspired by local nature, people, places and inventions.

To ensure that they create reflective installations that celebrate the Brightwater area, themes and locations will be chosen by YOU through consultations and craft activities with youth groups and families.

The installations will be wooden structures that adventurers open to reveal environmentally friendly artefacts created by the community. Artworks will be specific to each group and act as a devotion to their chosen theme.

If you would like to help unearth and identify the hidden gems in Brightwater, go to www.discoverbrightwater.com/gem-trail/ for more information.



The “s106” pot of money - continuing a short series

Last month we laid out the system whereby developers pay into a fund managed by the Area Action Partnership, to the benefit of Education, Sport, Open Space and Community Projects.

First, a summary of information received in answer to residents' questions on Education.

“On the school issue, £319,352 has been secured for primary education from the Turners garage site. In relation to the academy issue we have a statutory responsibility to ensure that every child can be provided with a place in a state-funded school in the relevant area. Academies are state funded schools therefore they have to be taken into account when the impact of additional housing is considered with respect to the sufficiency of school places. Sedgefield Community College is the local secondary school for Sedgefield and Fishburn, therefore if there is insufficient capacity at that school to accommodate additional pupils from housing developments, it is appropriate that the council requests s106 monies to contribute towards additional teaching accommodation”.

Other funds received & expected
from Storey Homes (St Edmunds Manor) - £66,666 Community + £80,000 Sports
from Taylor Wimpey (Eden Drive) £91,973 Community + £110,367 Sports (similar sums due in July 21).
from Tolent Homes (Hardwick Grange) £147,600 for Open Space, due in July 21
Livin (Hardwick Homes) should contribute £151,397 for Play/ Recreation. No date is yet specified.
As at January 2021 a total of £349,006 has been received with no further payments due until July 2021. Receipt of further funding is subject to market conditions and developer realisation of anticipated revenues.

AAP decisions

“Given the protracted schedule of receipts the S106 Group took the decision to prioritise capital sports projects, once sufficient funding had been realised, as these also legally constitute facilities for the benefit of the community.

Whilst no funding has yet been formally allocated, Sedgefield Harriers are in the process of submitting a business case in support of their indicative allocation of £345,000.

Further funding will be committed for applications by other constituted Clubs as and when it becomes available during 2021/2022.” cont’d...

“Total funds identified as Community contributions are £240,722, and applications for Community projects will be formally invited once the remaining funds are received from 2022 onwards.”

Sedgefield Town Council's role

In this type of funding system, local councils are expected to play a part in the allocation of funding, but STC say that they only recently learned of the above information and have had no role in funding decisions taken. Because the question was raised at

recent meetings of the Town Council about the legality committing the majority of the s106 monies for this area to one capital sports project, the East Durham Community Athletics Track, without consultation in this community, it was decided to hold an **Extraordinary Meeting of Sedgefield Town Council on Tuesday 27th April** to debate the issue.

We will keep you informed of the outcome and would welcome your comments on this issue.

Creating a national walking network

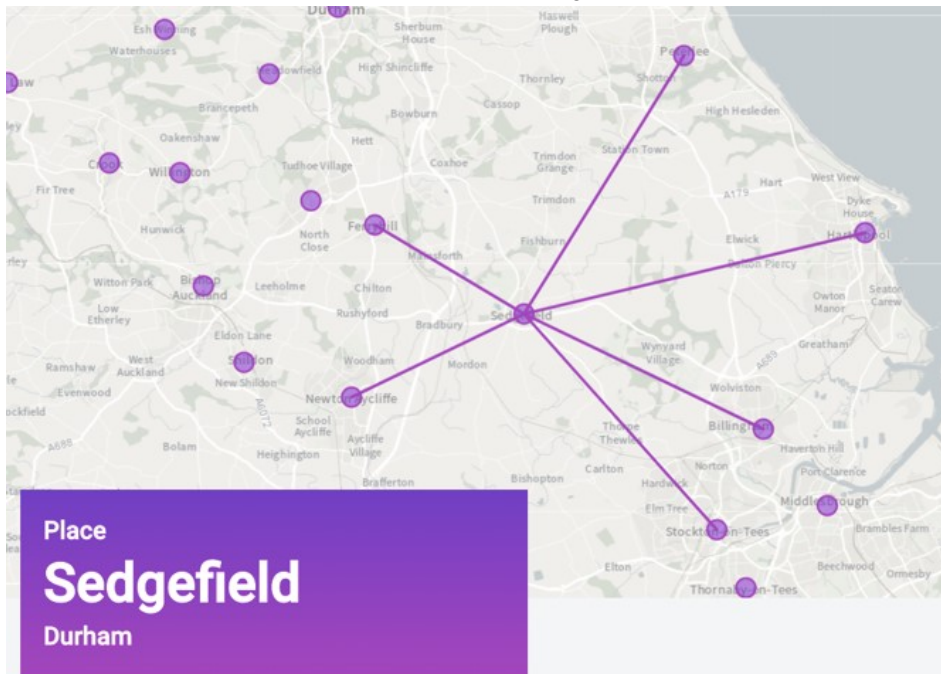
Slow Ways is an initiative to create a national network of walking routes connecting all of Great Britain's towns and cities as well as thousands of villages.

Using existing paths, ways, trails and roads, people can use Slow Ways routes to walk or wheel (pushchairs, wheelchairs but not bicycles) between neighbouring settlements and combine them to create longer distance trips. It's designed to make it easier for people to imagine, plan and go on walking journeys.

There are currently over 7,000 Slow Ways stretching for over 100,000km. This network of routes was created by 700 volunteers during the Spring 2020 lockdown, creating a unique Slow Ways map in the process.

The next challenge in 2021 is to walk, review and verify them all - checking 100,000km of Slow Ways in the process.

Sedgefield News had a sneak preview of the website before it officially launched on 23 April. Sedgefield has six different Slow Ways. The routes are named using the first three letters of each location with the most westerly location listed first. The routes to and from Sedgefield are:



FERSED	Ferryhill to Sedgefield	9km	6mi
NEWSED	Newton Aycliffe to Sedgefield	12km	7mi
SEDPET	Sedgefield to Peterlee	20km	12mi
SEDBIL	Sedgefield to Billingham	18km	11mi
SEDSTO	Sedgefield to Stockton	17km	10mi
SEDHAR	Sedgefield to Hartlepool	20km	12mi

Each of the routes now needs to be verified which you can do by walking one of the routes and completing a simple online form. You can also survey the routes and suggest better alternatives.

You can find out more at their website: www.slowways.uk



ARTS UPDATE with Geoff Millichap
email: sedgefieldartsandevents@outlook.com

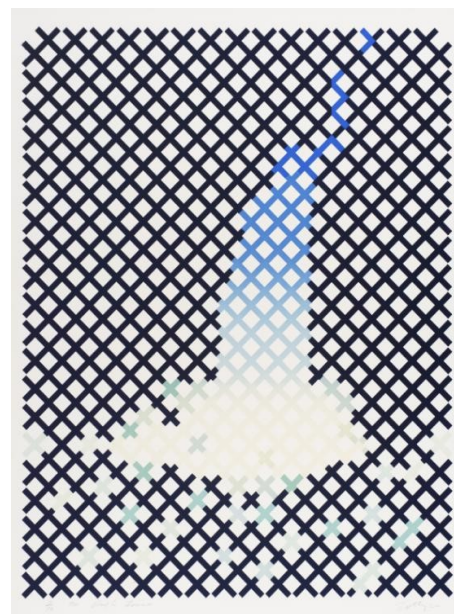
William Tillyer Exhibition

William Tillyer's exhibition at London's Bernard Jacobsen Gallery has recently reopened. Born in Middlesbrough & a student of Middlesbrough College of Art during the 1950s, Tillyer has become one of the leading figures in English art, showcased in exhibitions around the world since the 70s & popularised by David Bowie, who was a fan & collector.

Tillyer is adept in etching, screen printing, & watercolour techniques, produces art at once both experimental and familiar, and is lauded among other things for his expressive landscapes of England.

Pictured on the right is Tillyer's novel interpretation of High Force waterfall.

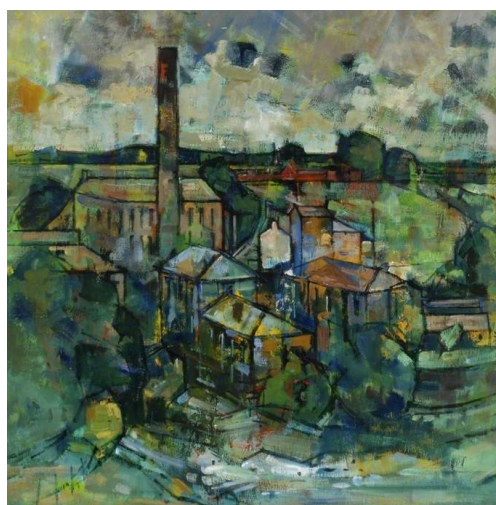
The gallery is far from here but the exhibition is staged online for us all to enjoy at www.jacobsongallery.com/william-tillyer-watercolours



Barnard Castle Art Society: Douglas Pittuck

Renowned artist Douglas Pittuck began a decades-long association with the town of Barnard Castle in the 1940s & it was in 1958 that he painted the mural which can be seen on the wall of St Mary's Parish Hall. It is his most well known work today.

Originally from London, he served in the armed forces during the war before making his home in Barnard Castle as an art teacher at Barnard Castle school. Alongside teaching he also produced work at a prolific rate including the much-loved St Mary's mural, depicting everyday life in the town during the 1950s.



A discussion of his life, presented by Christine Hartas from Barnard Castle Art Society, will be hosted online on 5th May at 6pm. See website www.stmarysbarnardcastle.org.uk/events/christine-hartas-on-douglas-pittuck-from-every-angle/

A planned exhibition of Pittuck at The Witham, Barnard Castle was postponed last year but as soon as there are any announcements of plans to bring it back now that museums & galleries are reopening, we'll bring them to you here.

Lindisfarne Festival Line-up Announced

What better way to put the long months of solitude behind us & look forward to summer than to learn that the Lindisfarne festival is back & bigger than ever?

Since its inaugural staging in 2015, the festival has gone from strength to strength, developing its own unique identity on the festival landscape thanks to its blend of music, arts and workshops and its sensational setting in beautiful Northumbrian landscape overlooking Bamburgh Castle & Holy Island.

This year, headliners are Alabama 3, Groove Armada and Dizze Rascal and there are dozens more acts. The festival takes place from the 2nd - 5th September. Tickets are available now with discounts for early bookings.



For a full list of acts & to purchase tickets visit lindisfarnefestival.com

Sedgefield Lyric Singers Update

Sedgefield Lyric Singers have picked up again with weekly online rehearsals, with an eye on soon returning to live in-person sessions, and Sedgefield Lyric Youth Choir working on performances to celebrate the forthcoming 50 year anniversary of the WWF's founding. For updates on the return of live rehearsals & performances, and openings for new applicants, please watch this space or visit www.facebook.com/SedgefieldLyricSingers

WASH Theatre Group Bishop Auckland

WASH Youth Theatre Group has been running in Bishop Auckland since 1997. Following a social distancing hiatus, live in-person theatre sessions have now been reinstated for young actors in Woodhouse Close Church Community Centre every Monday from 6pm.

If you're interested, please contact the group via Daisy Arts Facebook www.facebook.co.uk

Jamie Bell Movie Première "Without Remorse"

One of the brightest acting talents to emerge from the local area is Jamie 'Billy Elliot' Bell.

Originally from Billingham, he is now a Hollywood movie star. His latest picture, the John Grisham movie adaptation, "Without Remorse" premieres this month, not in cinemas, but on Amazon Prime.

Free for those with a subscription so save yourself a trip to the cinema & watch from the comfort of your own home.

DIARY & EVENTS

Please send information to diary.sedgefieldnews@gmail.com

To all clubs, groups and societies - this is your space. Please do use it!

One Step Forward Bereavement Support

As Panny Pighills left the village some time ago, the first port of call for bereavement support is now Sue Archer.

You can contact Sue on 07779 093386 or 01740 239278 or go to our Facebook page:

www.facebook.com/onestepforwardssedgefield

Unfortunately we can only offer telephone support at the moment, but we hope to be back at St Edmund's on Thursdays (15:00-17:00) before too long.

Christian Aid Week (10-16 May)

Normally at this time of the year our 50+ volunteer collectors would be gearing up to take part in the annual house to house collection here in Sedgefield, Bradbury and Mordon for the work of Christian Aid. It has been an event that has raised many thousands of pounds over the last 25 plus years.

Unfortunately, due to the continuing uncertain Covid-19 situation we have been unable to co-ordinate the event again this year. However the work of Christian Aid continues to help some of the world's poorest people. Information on how to support the work can be found by visiting the Christian Aid web site.

We will put the banners and posters out on display at the Methodist Church here in Sedgefield in order to advertise the week and we invite you to make your gift online at www.caweek.org

Thank you for your continued support. *David and Margaret Glass*



In 1075, Durham was a buffer state between England and Scotland...

Unable to govern this region, the English king came up with a simple solution - give the local bishops secular powers and let them deal with it!

For several centuries, these newly created 'Prince Bishops' effectively became autonomous rulers. They had the right to raise armies, mint coins and levy taxes, so long as they used them to protect the northern border.

From the 12th to the 14th centuries, the Prince Bishops of Durham regularly occupied Bishop Middleham Castle on the outskirts of Bishop Middleham. Medieval accounts indicate that the watery landscape was used for the rearing of swans and doves, and to produce hay from meadows and water-meadows. The buildings were rarely occupied from the mid 14th century onwards, so the site survives largely untouched, giving archaeologists a unique chance to get an insight into the earliest phases of these buildings. Bishop Middleham Castle presents a tantalising opportunity to learn more about two key areas - early medieval buildings, and how the Bishops of Durham extracted wealth from their land.

In August 2019, DigVentures worked with community participants to excavate two trenches at Bishop Middleham Castle. The excavation was designed to investigate the castle layout and significant structural remains were uncovered indicating the elite status of the Middleham Castle.

This year, DigVentures have undertaken a second season of archaeological fieldwork to discover more about the nature of the high-status buildings and to understand how this site might have looked like in the medieval times.

With everything they are finding, they hope to have a clearer picture soon!

For reports on the latest venture, visit www.digventures.com/bright-water/



Sedgefield
Town Council

Sale of Dog Bags – From Tuesday 13th April 2021*

Dog bags can be purchased from the side entrance of Sedgefield Parish Hall between 10am and 11am on Tuesday and Thursday mornings. Dog bags cost 60p per pack. It would be much appreciated if you could have the correct change when making a purchase. Social distancing measures will be in place and your co-operation would also be appreciated.

Please note: Sedgefield Parish Hall remains closed to the public for bookings at this time.

SEDFIELD LIBRARY

Tel: 0300 026 9521

The library is open again with temporary opening hours:

Wednesday 9:30 - 12:30

Thursday 9:30 - 16:30 (closed for lunch from 12:30 - 13:30)

Friday 13:30 - 17:30

Saturday 9:30 - 12:30

Browsing will be limited to 20 mins and only 4 visitors allowed at a time, so you may be asked to queue patiently outside.

See www.durham.gov.uk/libraries for updates and information and to updated with any service changes.

Also the Facebook page [CountyDurhamLibraries](https://www.facebook.com/CountyDurhamLibraries)

is absolutely full of interest. We recommend following them.

1st Sedgefield Scout Group

In response to April's front page article, 'Clubs, Societies and Groups'

1st Sedgefield Scout Group were looking to be up and running again sometime during April.

Unfortunately however, some key members of the leadership team from our Cub section are no longer able to commit to weekly meetings. As a result, we are seeking additional help to get us back to full strength, for a restart to be possible.

If you are able to help, please get in touch by email:

Scouts.sedgefield@bishopaucklandscouts.org.uk

Thank you very much in advance.

Kathy Guppy, Secretary,

1st Sedgefield Scout Group

LIKE NETBALL?

COME ALONG TO OUR TRAINING SESSIONS....GREAT WORK OUT AND GREAT FUN!

ALL ABILITIES WELCOME
FIRST SESSION FREE!
(£5 THERE AFTER)



6.30PM-8.30PM
EVERY TUESDAY @
SEDFIELD COMMUNITY SCHOOL

WOODLAND & WILDLIFE

A Project of Sedgefield Development Trust

Off-Road Vehicles, Litter & Garden Waste

Our volunteers put many hours of dedication into taking care of the Woodland & Wildlife site and it is very disheartening to get on site to see that others haven't been respectful to the area we love so much. Recently we have seen evidence of off road vehicles (see right), dumped garden waste, the leftovers of a night out (including a tent!) and the usual general litter.

The area is managed to create habitats for wildlife and the unwanted litter and garden waste can be very detrimental to the biodiversity of the site. Gardens often include plants which are invasive species. When they escape into wild areas, they can wipe out all other plants which are important to the life cycle of the insects, birds and mammals in that area. Volunteers have to spend many hours clearing away other peoples rubbish which has been dumped on site.

The solution to prevent vehicle access to the site is a tricky one, we are looking at ways to achieve this. Each incident of off road vehicles is reported to the police, who classify it as Criminal Damage. We would like to make this appeal to the public - PLEASE, if you see off road vehicle activity, inform the police or encourage any drivers you know to stay on privately owned land if permitted.



SEDGEFIELD FARMERS MARKET
On the Green, First Sunday Morning Every Month.

The gradual loosening of lockdown restrictions and the outlined plan ahead suggests that by June, a fuller, more normal Market might be possible. It is likely to still require social distancing and other well-practised precautions. Also in June we will begin to spread out the Market to accommodate more stalls. However, the first step for Sedgefield Farmer's Market will take place on **Sunday 2nd May** when the SDT's **Bicycle & Active Travel** group returns to the Green to provide help with cycle maintenance. They will be set apart from the main market. Meanwhile, if there are any other changes for May you will find them on our Facebook page or

CEDDESFELD HALL

Home of Sedgefield Community Association (SCA)

Maxine Robinson

SCA is deeply saddened by the death of Maxine Robinson. Maxine was a loyal, hardworking, knowledgeable, astute and very dedicated Trustee for many years. She diligently served the community of Sedgefield in various and wide-ranging roles, which meant she was involved with many people (of all ages) within the town.

Maxine was born in Sedgefield, at Hardwick Hall. She spent her childhood years in West Cornforth, and then Hartlepool before coming back to Sedgefield, when she married John, in 1982. She settled to family life and got involved.

So many people, from different groups, organisations and charitable associations will remember her enthusiasm, work ethic and wide-ranging skills. During her time with Sedgefield Ladies Circle (for whom she became Northern Area Chairman), she took a lead role in arranging the annual children's and pensioner's Christmas parties. She was active (as a mother and a grandmother) with the school PTA; she particularly enjoyed planning aspects of the SCA Mediaeval Fayre, organising the raffle, business sponsorship and so much more; she helped run the local Brownies group; she was part of the Twinning Association. Maxine was Secretary for Sedgefield Civic Trust and helped in the setting up of the annual youth awards, floral awards, and mobile movie nights. For over 10 years, Maxine was Chairman for Friends of Darlington Civic Theatre; around £100,000 was raised for them over the years. She organised open days in the theatre around panto time and she arranged receptions for the public to meet the actors.

Maxine was also a long serving Town Councillor and as Mayor of Sedgefield, she raised money for Butterwick Hospice, various youth groups and the GP surgery. She also arranged the mural which is hung in the entrance to the surgery.

Above all, Maxine loved her family, her children, and grandchildren - every hair on their head - with all her heart. She will be greatly missed and very fondly remembered by the many people, from all walks of life, who knew her.

Maxine knew the true meaning of 'Service' and gave a great deal of her time and considerable expertise, much of it behind the scenes, so that others could experience, enjoy and benefit from community events and activities.

For more information on the gradual re-opening of Ceddesfeld Hall events, regular activities, room hire and bar opening times, please call Wendy on 01740 620206, Pat on 620607, John on 620042, or Sarah on 622185 - or visit www.sedgefieldsca.org.uk



HOMEWORK HELP
A Project of Sedgefield Development Trust

We've welcomed another couple of students recently, which is lovely. We like to help people out with their learning whenever we can. If you'd like help or can offer some, please email homework@sedgefielddevelopmenttrust.co.uk or look for us on Facebook.

SEDGEFIELD ENERGY SWITCH
Saving you money on your gas and electricity bills
A Sedgefield Development Trust initiative

The current registration period closes on Monday 17th May.
Register at www.sedgefieldweb.co.uk
For help, please call **07980 134 594**.

To contact Sedgefield Development Trust, please email secretary@sedgefielddevelopmenttrust.co.uk or visit www.sedgefieldweb.co.uk

Private Investigator
+44 (0) 7543 271886



W: www.icinvestigationsuk.com
IC INVESTIGATIONS
E: info@icinvestigationsuk.com



Caravan Storage

Safe secure site with electronic gate & security cameras near Sedgefield/Fishburn. Large plots, hard standings, extra wide roads, good access. Exit close to A1/A19

Please contact 07974 728 307




Are you looking for new dentures?

Call to book your free consultation on
01740 645899

SEDGEFIELD NEIGHBOURHOOD WATCH

How safe is your dog?

Since the start of lockdown, pet dogs have become more and more popular. Demand has meant that puppy prices have increased dramatically. This has also led to an increase in unscrupulous breeders so if you are in the market for Man's Best Friend take extra care by ensuring that you deal with a registered breeder. Make sure that you visit the premises where the dogs are kept, inspect the conditions and ask to see both parents. If both aren't available then see at least one and ask for the details and ownership of the other so that you can check it out and if possible, visit that parent also.

This is especially important BEFORE you hand over any money. Plenty of advice is available on the internet about pet purchases so make sure you do your homework first.

If you are already a dog owner then it is highly likely that your pet has increased in value. NHW have received enquiries for advice from dog walkers who are apprehensive given the stories circulating regarding dog thefts.

We would advise all dog owners to take the following precautions:

- Keep an up-to-date photo of your pet;
- Keep an exact note of the contents of your pet's microchip;
- Don't walk isolated routes;
- Vary your walking times and routes;
- Don't publicise your puppy on social media
- Never mention to anyone how much you paid for it;
- Try to go for a walk with a friend or relative;
- Carry a personal attack alarm; (Police approved models on Amazon start at about £5.50);
- Make sure your garden is secure with a high gate that is kept locked.

It's better to take these precautions than to be a victim.

Crime isn't as common as you think... but don't be a victim. Please lock up, stay safe, sleep well.



Nominated for
Independent Optician of the Year

Cooper & Barr
Opticians

4 Front Street, Sedgefield
01740 582060
www.cooperandbarr.co.uk
sedgefield@cooperandbarr.co.uk

Sedgefield Physiotherapy Practice (est.2001)
Now with **Chiroprody**

8 North End, Sedgefield TS21 3BS
John Platts BSc. (HONS) MCSP SRP
Molly Smith BSc. (HONS) MCSP SRP
Chartered Physiotherapists
Appointments 8.30am - 8pm, Mon - Fri
01740 629501

Recycling Centres now staying open for longer

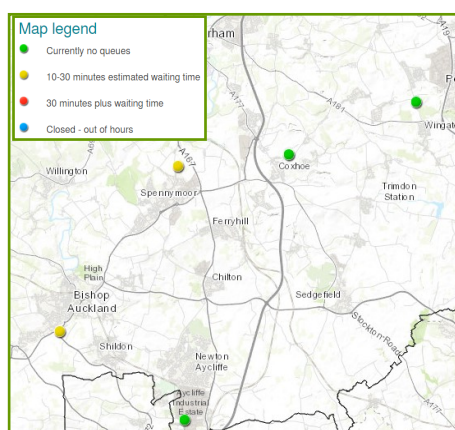
Many of Durham County Council's household waste recycling centres will now be open from 9:00am to 6:00pm each day. Our closest, in Coxhoe is open 10am-16pm Monday to Thursday and 9am-18pm on Saturdays and Sundays.

The council has created a new online interactive map (as seen right) which members of the public can use to get an indication of whether or not their local site is busy.

A green light indicates there is no queue at a particular centre, whereas a red one means that visitors are likely to face a queue.

The map is updated once every hour at www.durham.gov.uk/hwrc

As we ease out of the Government's lockdown restrictions, members of the public are advised to only visit the recycling centres if necessary and that some sites may be busy.



Edgoose-Clubley Computer Services
IT Support for Home and Business

Remote and On-Site Support

Computer Repairs
Software & Hardware Support
Wired & Wireless Networking
Virus Removal
Data Recovery

Price Match Promise **01740 622 420** **As Always No Fix No Fee**
www.edgoose.co.uk



SALON QUALITY HAIRDRESSING

in the comfort of your own home

Back after another lockdown, I want to assure you that I take your safety very seriously. I use PPE & sanitise all equipment before & after visits.

It's safe to enjoy a hairdo again!
Call VENITA: 07774 921 986

The small boxes above and below cost £23 per entry.
To advertise, email news@sedgefielddevelopmenttrust.co.uk

TRIMDON MOBILE COMPUTER REPAIRS. 07955 211 040

Laptops & PC desktop towers. Does your computer run slow? Problems with Internet connection, virus/malware or adware? Laptop screen broken? **iPhone & iPad repairs**

See www.tmc.co.uk for full list of services

Email inquiries tmc.co.uk
No Fix No Fee! Yes That's Right - NO FIX NO FEE!!

Winterton Gas & Plumbing Services

Sedgefield based Servicing Specialist

Boiler Installations & repairs:

Fires: Cookers & Hobs:

Meters: Combustion Performance
Analysis Landlord Certificates

Call 01740 621331

Mobile 07908614582



523788

JPL OIL & GAS SERVICES

- CENTRAL HEATING SERVICE & REPAIR
- INSTALLATION
- GAS BOILER SERVICE
- LANDLORD CHECKS
- GAS FIRE SERVICE



Jonathan Little

T: (01740) 629 321

M: 07795 417 665

E: jpl.oilandgasservices@hotmail.co.uk

f / jploilandgasservices



No. 229560

CREATIVE TILING & PLUMBING

JOHN TATE



FREE QUOTE

T: 01740 629722

M: 07758 418430

W: CREATIVE-TILING.COM

NC Plumbing Services

NO JOB TOO SMALL

From drip to full bathroom re-fit
Free estimates - All work guaranteed
Out of hours call out available

Call Neil on 01740 474045

Mobile: 07882233219

Bathrooms, radiators, towel rails, central heating problems, garden taps, washing machines, dishwashers, kitchen sinks ...

To resume advertising, please email
news@sedgefielddevelopmenttrust.co.uk

Sedgefield Development Trust -
SUPPORTING LOCAL BUSINESS



Alderson Property Improvements

- All aspects of carpentry
- Alterations and conversions
- Full house renovations
- Small building projects
- Kitchens Designed & Fitted
- Bathrooms & Bedrooms

01740 621694 or 07742 537 705

jalderson91@yahoo.co.uk

Ian D Vickers

Extensions * Alterations * Kitchens
Bathrooms * Landscaping
BUILDING SERVICES

47 Winterton Avenue, Sedgefield

07837 897098 / 01740 238731

Email ianvickers86@gmail.com

Paul Jackson Builders

From Plans to Completion

For ALL Your Building Work

Call for FREE QUOTE

Tel: 01429 883 347

Mobile: 07904 812 028

Carpenter & Joiner General Builder

N. J. Burchett



Doors, kitchens,
stairs, windows.

Specialist in box frames and
sash replacements &
renovations.

All building and joinery work
undertaken.



Call Norman on

01740 622721

07768203505

L M Windows

Windows, Doors, Composite Doors,
Bow Conversions, Patio/French doors,
Window & door repairs, Fascias, Soffits.

Certass Registered, full insurance
backed guarantee and Mtc Registered.

Call Lee on 07720 391002 or

01740 623323

www.lmwindows.co.uk

JP GROUNDWORKS

for mini-digger hire,
driveways or patios in
stencil-crete,
tarmac, block paving or
concrete, dropped kerbs,
fencing, garden walls,
drainage, turfing,
house & garden removals etc.

Ring Jack on

07909 773829

or 01740 621154

Paul Watson Roofing

Sedgefield Based Local Roofer
All roofing work undertaken.

Felting, Slating, Tiling, Leadwork,
Dry Verge and Ridge, Skylights,
UPVC Fascias, Soffits, Guttering,
GRP rubber roofing & more.

Over 25 years experience.

All work guaranteed.

Facebook - Paul Watson Roofing

For an honest quote call

07881 538165

L & L Roofing Services

New Roofs, Rubber Roofing, Tiling,
Slating, Felt Roofs, Fibre Glass
Roofs, Lead Work, Dry Ridge &
Verge, Soffits, Fascias, Guttering

Tel: 01740 653 750

Mobile: 07970 381075

Ferryhill Roofing Contractors

For all types of roofing, including
flat roofing, guttering, fascias and
soffits. **Free estimates.**

Over 30 years working locally.

Call Trev on

01388 420 152

or 07887 886 558

LS DECORATORS

For Quality and Service
All Internal and External
Work Undertaken

For a free estimate,
call Liam on

07508 284 164

Sedgefield Electrics

**Fully Qualified Electricians
Domestic and Commercial**

Local, Sedgefield based
Honest and reliable
Free quotations and advice

Call **Paul Warnett**

07857 341 743

01740 622 669

or email:

sedgefieldelectrics@hotmail.com

Corner Electrics

Need a small job doing?

Quick response to all your needs

LIGHTS * FAULTS * REPAIRS

Domestic & Commercial Services

Call Jim on **07725 205 172**

or **01740 239 858**

Satisfaction Guaranteed

**Alex
Allcock**

Certified Electrician

07583 847831

AAllectricalservices@gmail.com

**For Commercial and Domestic
Electrical Requirements**

MCM Engineering

Local Electricians

All aspects of electrical work
undertaken.

Call **07398535169** or email
mcmengineering@yahoo.com
for info and a free quote

Gutter Cleaning

Gutters and downpipes cleaned
using vacuum system.

No ladders. On-board camera.

Soffits, fascias and
conservatories cleaned.

Gutters repaired and renewed.

07519 376870 (Local)

Sedgefield's Premier Cleaning Service is BACK!

Regular & deep cleans, End of tenancy,
1 off & regular weekly/monthly cleans
Current DBS. All products included
Uniformed, Reliable, Trustworthy staff
3 years' experience.

For a free, no obligation quote, call
Martina on 07887 216 614

Factory Carpets & Laminates

Quality flooring at discount prices

Over 400 rolls of carpet & cushion-floor in
stock. A selection of laminate flooring
with fitting service.

Full range of rugs and beds in store:

Free delivery on all purchases

Free estimates & home pattern service

We can beat any genuine quote!!

24 Front Street South,
Trimdon Village, TS29 6LZ

Phone: 01429 880220

bright & kind OVER 150... REVIEWS 

SEDGEFIELD CARPET CLEANER

- ★ We also clean...
- ★ Sofas, Rugs, Upholstery & Chairs
- ★ Based in Sedgefield
- ★ 100% customer satisfaction

GARY 07903 781351
sedgefieldcarpetcleaners.co.uk

 **HOME
SPRAYING
SERVICES**

**KITCHEN RESPRAY
FURNITURE RESPRAY
DOOR RESPRAY
GARAGE DOOR RESPRAY
UPVC WINDOW RESPRAY
BAR RESPRAY
FIREPLACE RESPRAY
SPLASHBACK RESPRAY**

PLEASE CALL: 01388 600078

 UNIT 2 WESTGATE ROAD 

BISHOP AUCKLAND DL14 7AX
JT@SPRAYTECHNOLOGIESAEROSOLS.COM

To advertise, email **news@
sedgefieldevelopmenttrust.co.uk**

AW Tree Care

Time Served Royal Horticultural Society
Arborist

Tree & Hedge Professionals

All Aspects of Tree Work
Felling, Dismantling & Pruning
Hedge Cutting
Emergency Call Outs
Site & Garden Clearance
Stump Removal & Grinding
Conservation & Habitat Work
Woodland Management
Tree Inspections and Reports

Sedgefield Based

**01740 620216 07544 802
052**

www.awtreecare.co.uk

Alexander Walker TechArborA., ND Arb., SOC
Arb **Fully Insured & Professionally**

EAST DURHAM

Tree and Garden Services

Tree removal/reduction. Stump Grinding.
Hedge removal/reduction. Turfing. Fencing
Regular grass cutting. Garden maintenance

Professional advice & service

All tree works carried out to BS 3998

Call Darryl at **01429 599723**

or **07833978801**

www.edtgs.co.uk

south durham gardening services

for all your gardening needs

free estimates

no job too small

local, reliable service

01740 654 237

07929 173 942



JONATHON CANNINGS
MORTGAGE BROKER

**Local, Independent
Mortgage Advice**

First time buyers, home movers, landlords
or simply looking for a new rate.

07940 734 245

ON BEHALF OF WILL ASSIST MORTGAGES LTD

**meikles
solicitors**

HOUSE SALES & PURCHASES

REMORTGAGES

WILLS & PROBATE

POWERS OF ATTORNEY

MENTAL HEALTH

FAMILY & CHILDREN

**YOUR LOCAL
LEGAL EXPERTS**

01740 620 255

7 High Street, Sedgefield

learn to drive with

Stan's School of Motoring

- friendly, patient and professional
- discount for beginners & block bookings
- theory and practical tuition

Call Paul Stanley on

07789 677 153

www.stansschoolofmotoring.com



Michelle Quigley

07807 989 037

Learn with a female driving instructor.
Call to discuss prices and special deals

SPORTS UPDATE

Email chrisjlines@aol.com

As anticipated last month, grass roots sports competition has resumed! If you've passed the cricket club or community college in recent weekends, you will have seen and heard the once familiar sights and sounds of matches being played. Not all sports have reached that stage yet, but it's so good to be able to report on some competitive action again!

Cricket

The start of the local cricket season on 17th April was a sign that the roadmap to recovery is working, and after a short, but hugely enthusiastic pre-season, Sedgefield Cricket Club's teams started their league campaigns in impressive fashion. With a starting XI consisting entirely of local players (of whom 10 came through the junior ranks) the 1st XI began with a thumping 138 run victory over Whitby. Not to be outdone, the 2nd XI travelled to Bedale and won by 139 runs, with Graham Scanlon scoring an unbeaten century. The following day, the 3rd XI racked up 277 runs for a solid 'winning draw' and with that, the season's sail seems to be set fair. By the time this reaches you, it will be a couple of weeks further down the line and the club will have a clearer picture as to how competitive all the senior teams should remain throughout their seasons.

As well as the return to competition, Sedgefield Cricket Club has resumed junior coaching, and is introducing some new initiatives for 2021, including softball cricket coaching. Softball cricket is designed to build on the skills that youngsters started developing through the successful All Stars programme that has run in recent years, in a game-based, fun and safe setting.

Softball cricket for girls (Years 4-6) began towards the end of April, on Fridays from 6:00-7:30pm at the club. For more information and to get involved, email sedgefieldcc@outlook.com. Softball cricket for boys will start on Friday 21st May at 5:00pm. For more details, contact Mike Ridley on 07773 081278.

Until 17th May, the clubhouse bar will be open for outdoor service most weekday evenings and throughout the weekend. After that, indoor service, subject to restrictions, should be allowed.

Run by volunteers, the cricket club is grateful for the huge support received from the community already this year. The club provides a brilliant asset to Sedgefield and looks forward to residents' continued backing as the year progresses.

Below: Players pause during Sedgefield Cricket Club's 1st XI match to pay tribute to HRH The Duke of Edinburgh



Football

The return to action for St. Edmund's FC has seen mixed fortunes for the club. In the league, results have not gone St. Edmund's way, but with two games a week for the next month or so, there will be plenty of opportunities to turn around that form. Meanwhile, the team recorded a good 6-1 win away in Sunderland to progress to the last 32 of the Durham County Sunday Cup. The next tie will be at home, against Sunderland Port of Call on 9th May.

In junior football, the various Sedgefield Youth FC teams have also resumed competition, and appear to be in brilliant form. The goals have been flying in, with all of the teams recording excellent wins in their respective leagues. Players in the new U7s team are continuing that club tradition and have already racked up an impressive sequence of results in early fixtures.

Athletics

Members of Sedgefield Harriers have returned to competitive action. The first event at which club athletes could race was the re-arranged North East Cross Country Relays, which took place in early April, not far away at Thornley Hall.

Organised by the North Eastern Counties Athletics Association (NECAA), the event adhered to strict COVID-related protocols and had a limited capacity. Sedgefield was able to secure spots for two teams, the Senior Men and Masters Men (V40+).

In the Senior Men's race, the Harriers' team featured two new members making their debuts in the club vest, Colin Gandy and Peter Summerbell.

The four runners (Colin, Roger Whitehill, John Haycock and Peter, pictured below) found themselves competing against a very strong field, with one team including the reigning English National Cross Country Champion.



All Sedgefield runners performed well on a dry and relatively flat course (very untypical for cross country!) and finished in a very creditable 22nd place. The Masters Men's team of three (Paul Weir, Mil Walton and Chris Lines) were part of an exciting race and secured an excellent sixth place, in the mix with some of the biggest and traditionally most successful clubs in the region.

The following weekend, the club held its own event, with the 30th running of the Gerry Kearsley Handicap. In the unusual circumstances, the race was arranged differently this year, with race director Ean Parsons arranging everything to adhere to the latest COVID rules.

Only club members could take part and in contrast to normal handicaps, the fastest runners set off first, to ensure social distancing at all times. The course was the usual two-lap multi-terrain route that started and finished in Bishop Middleham.

After the handicaps had been incorporated into the results, the overall race winner was junior Harrier Rory Letts in a run time of 45 minutes and 29 seconds. The women's winner (and fastest woman) was Lisa Darby in 44:42, and the fastest overall runner was Mark Raine in 36:59.

That's all for this month. As usual, please send any sports news to chrisjlines@aol.com.